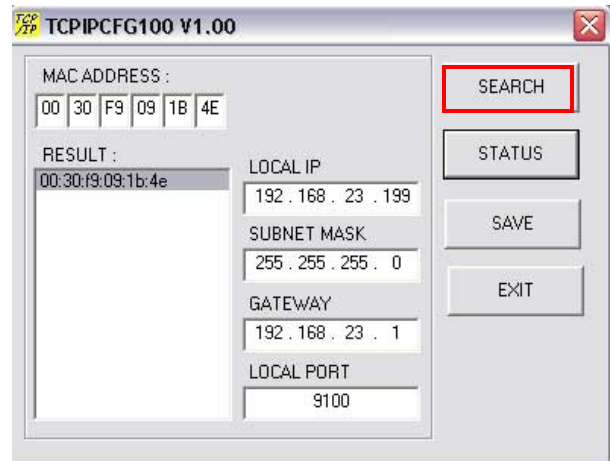
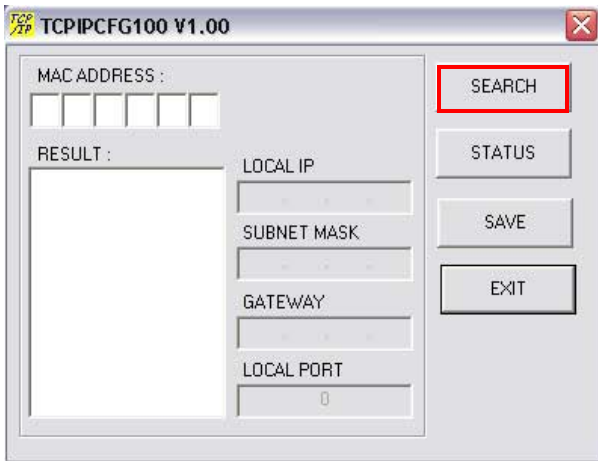


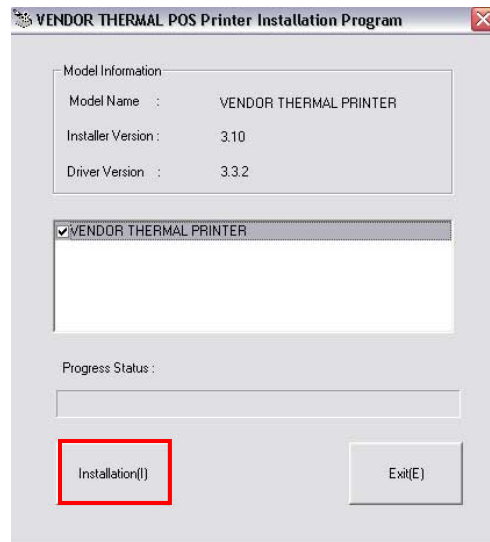
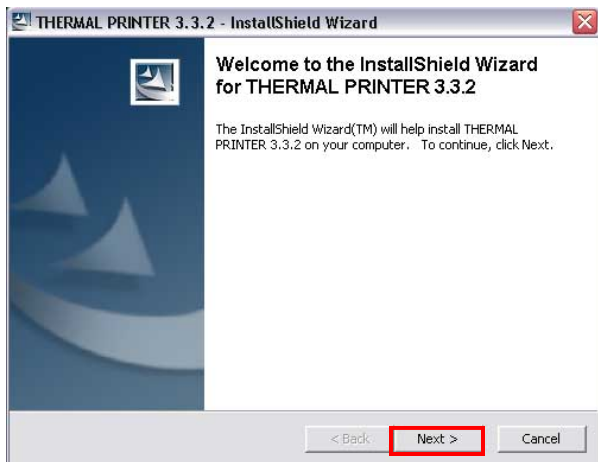
POS-X XR510 & XR210 Ethernet Interface Install Guide



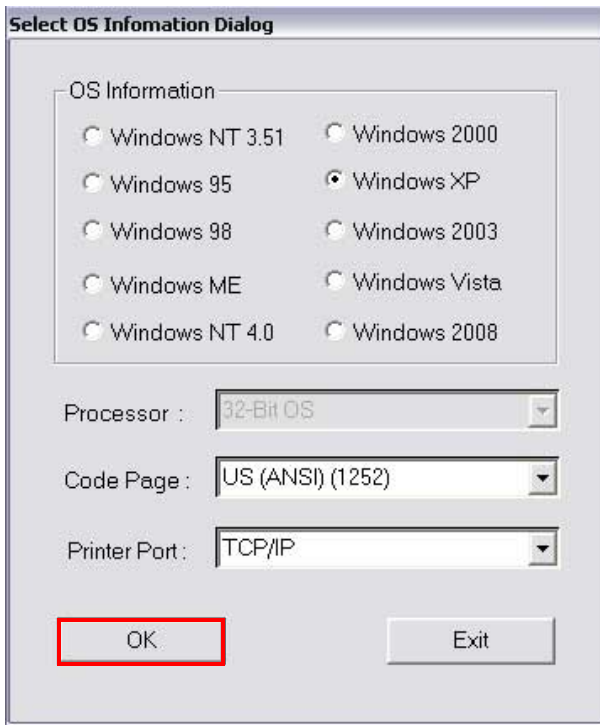
- 1 Start the **TCPIPCFG** program from the desktop shortcut. Make sure that your printer is hooked up to your network (this can be done with a direct connection to the PC using a crossover cable or through a regular network connection) and click on the search button. This will search for any printers on your network.
- 2 Once the program is done searching it will list all of the found printers. You will then be able to edit the **LOCAL IP ADDRESS, SUBNET MASK, and GATEWAY** to match your network requirements. Once you have made these changes click on the **SAVE** button this will save your settings to the printer.

XR510 Instructions

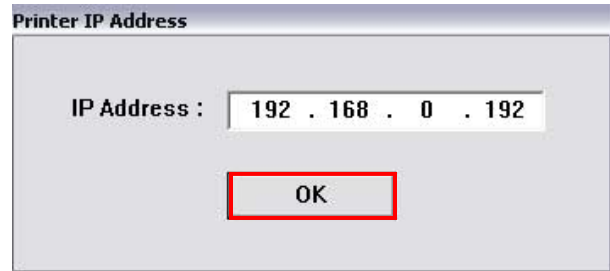
For XR210 instructions jump to step #9



- 3 Start the **XR510.exe** and click on the Next button
- 4 Make sure the **Vendor Thermal Printer** option is selected and click **Installation**



- 5 Select your operating system from the list provided. In the **Printer Port** section select TCP/IP then click **OK**



- 6 Input the IP address you set in step #2 click **OK**

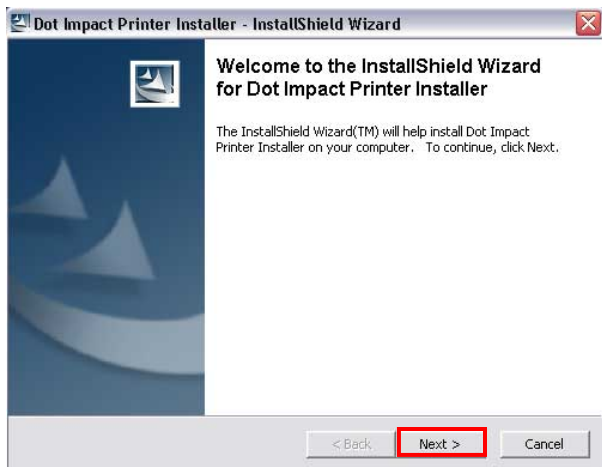


- 7 Depending on your requirements you can set the printer as the default printer in this screen. After making selection click **OK**

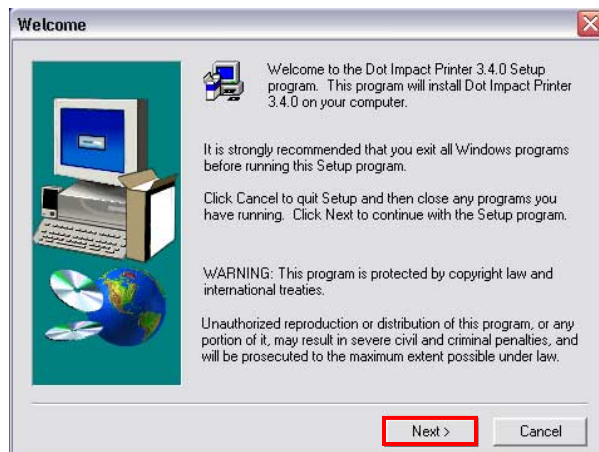


- 8 The printer is now installed click **OK** to reboot the PC.

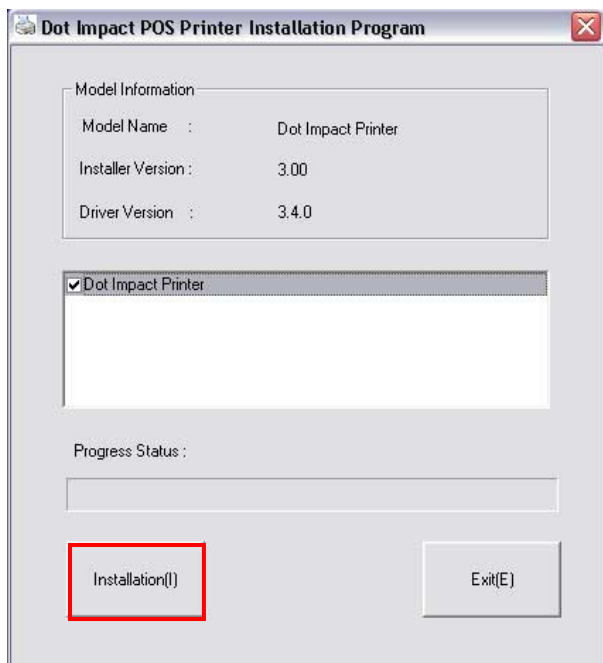
XR210 Instructions



- 9 Start the **XR210.exe** and click on the **Next** button.



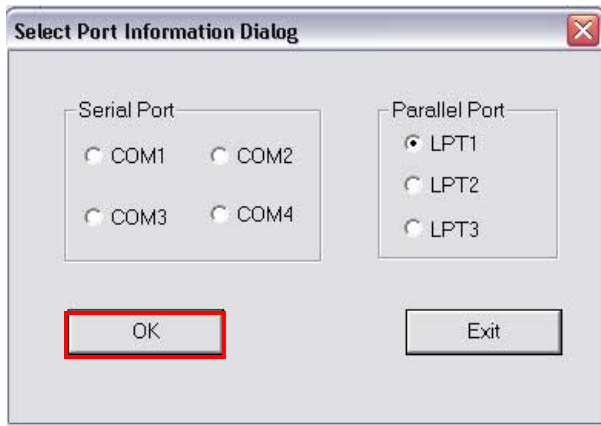
- 10 Start the **XR210.exe** and click on the **Next** button.



- 11 Select the **Dot Impact Printer** option and click **Installation**.



- 12 Select your Operating System and click **OK**.



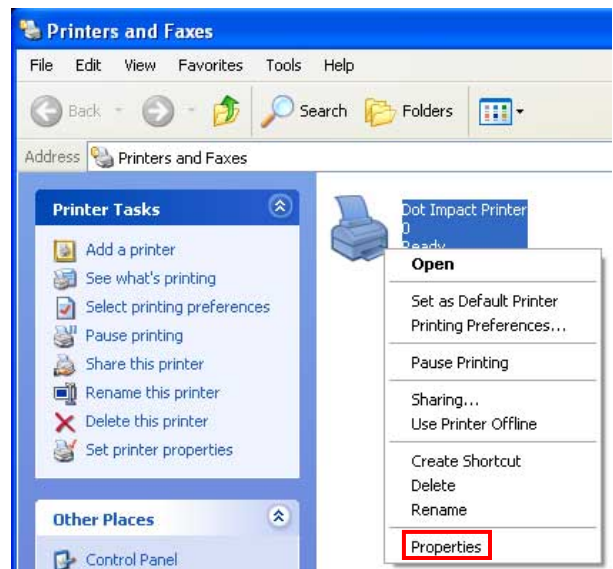
13 Select any of the available ports and click **OK**



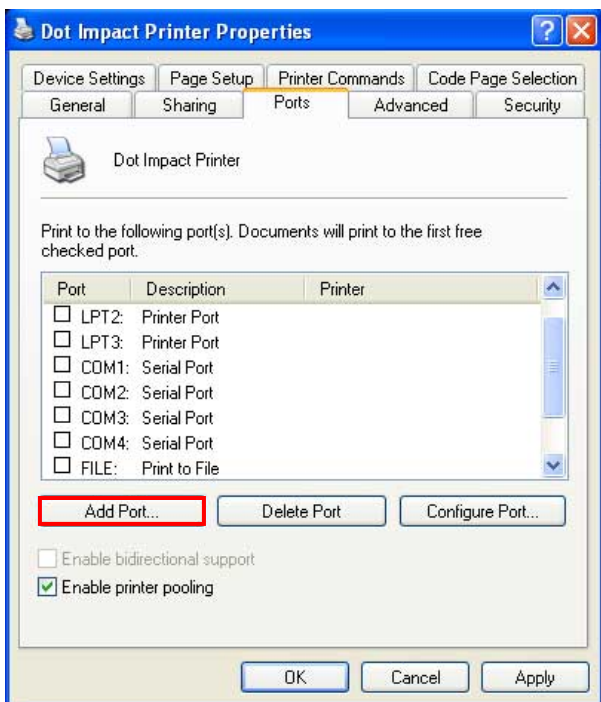
14 Depending on your requirements you can set the printer as the default printer in this screen. After making selection click **OK**



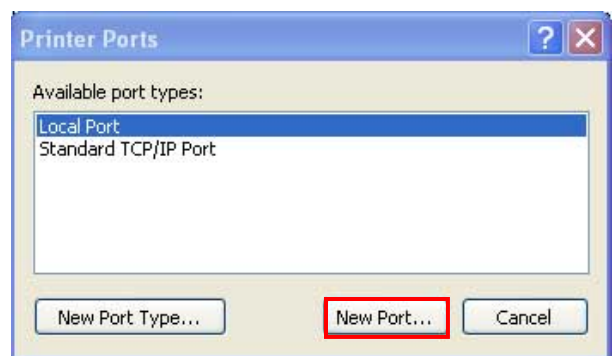
15 Click **OK**



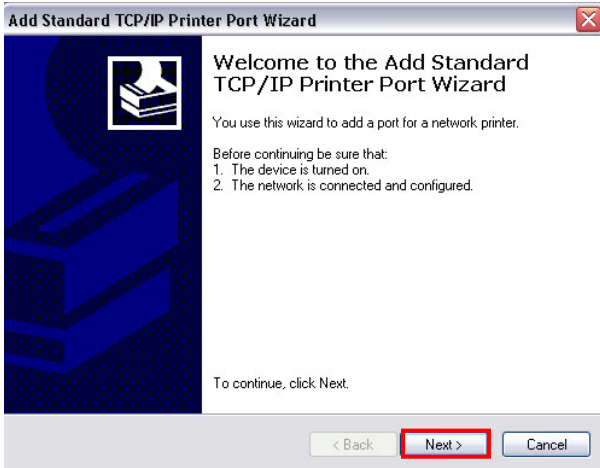
16 Go to **Printers and Faxes** Right click on Dot Impact Printer and select **Properties**.



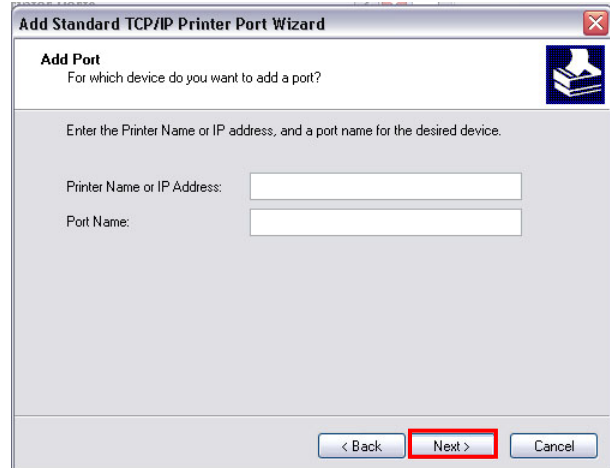
17 Click **ADD PORT** .



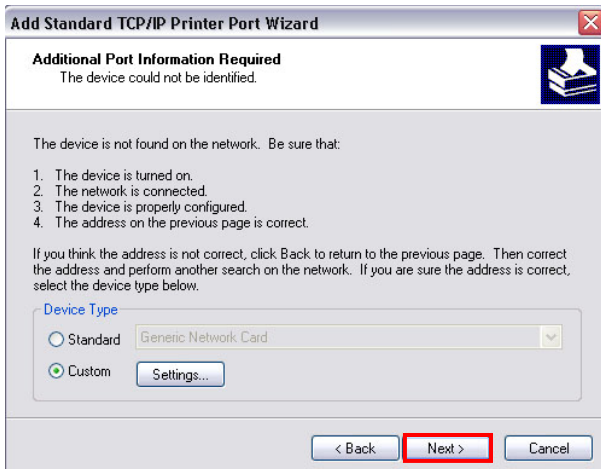
18 Select **STANDARD TCP/IP PORT** click on the **New Port** button.



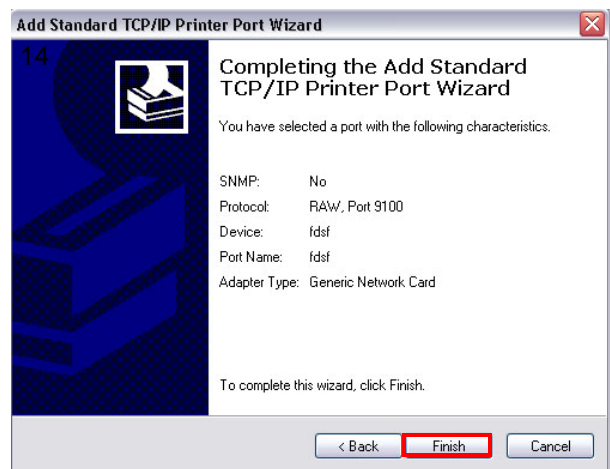
19 Click **NEXT**



20 Input the IP address you set in step #2 the port name will auto populate you can change it if you would desire click **NEXT**



21 For device type select the **Custom** option there is no need to change any settings. Then click **NEXT**.



22 Click the **NEXT**.