

# Aldelo EDC 6.2 Upgrade Guide

For System Requirements please see:

[http://www.aldelo.com/AFRPro\\_Requirements.aspx](http://www.aldelo.com/AFRPro_Requirements.aspx)

[http://www.aldelo.com/EDC\\_Requirements.aspx](http://www.aldelo.com/EDC_Requirements.aspx)

## Initial steps:

Download the following files from the Aldelo download site to your desktop:

- AldeloPre.exe (Aldelo Prerequisite Installer) needed if upgrading from Revision 6.1.0.23 or prior
- EDC62\_EN.exe (Aldelo EDC)
- AFR38\_EN.exe (Aldelo for Restaurants Suite of Products)

You will want to have your Aldelo for Restaurants and Aldelo EDC serial numbers available for referencing as product registration and activation may be required.

Download and install **ALL** Microsoft Updates on all your machines. All machines will require the Microsoft .net framework 3.5 be installed.

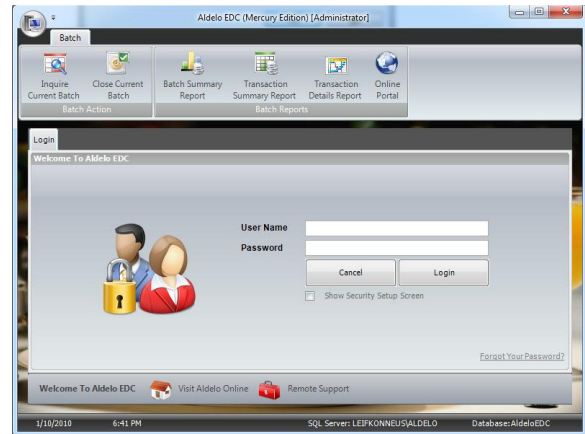
***This guide assumes that you are upgrading from EDC revision 24+ and Aldelo for Restaurants 3.8.10+ on a Windows XP Pro operating system. This guide also assumes that the credit card processing merchant account is set up for processing credit cards ONLY.*** If using check, EBT, or Debit processing contact the Aldelo Support Department for further assistance.

While upgrading the Aldelo EDC your credit card processing capability will be interrupted. You should allot approximately 30 minutes for the completion of this process, however times may vary based on the number of machines you are upgrading.

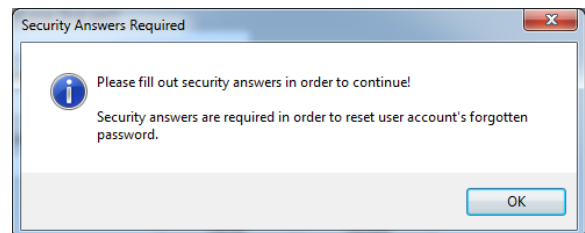
1. Uninstall the current version of your EDC. **Control Panel=> Add/remove Programs.** Highlight the Aldelo EDC icon and select **“Remove”**.
  
2. Run the EDC62\_EN.exe installer. Follow the prompts. Launch the EDC program. At this point you may be prompted for activation, if so contact the Aldelo Support Department for assistance otherwise continue on to the next step.  
\*\*\* To ensure that your installation is PA-DSS compliant please reference the PCI compliancy guide installed along with the EDC on your system.

# Aldelo EDC 6.2 Upgrade Guide

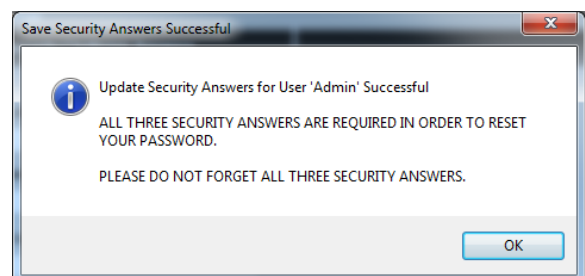
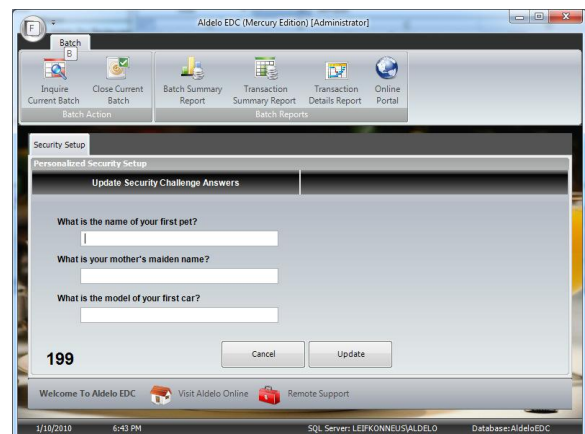
3. Log into EDC with your Administrative user name (**Administrator** is the default) and password.



4. When you log in you will be asked to create 3 security questions:



5. Once you have created the answers to these 3 challenge questions you will get the warning:



# Aldelo EDC 6.2 Upgrade Guide

By answering these 3 questions you will be able to RESET YOUR OWN PASSWORDS in EDC. The Administrator will be the one responsible for the resetting of passwords if you are locked out or if the passwords expire. Aldelo Tech Support will not be able to reset the passwords anymore in the EDC version 6.2.

***If the Administrator forgets the answers to the challenge questions you will have to create a new database.*** [NOTE] It is recommended that each person using the software have their own account and that there are at least two user accounts with Administrative rights.

Next you need to uninstall your Aldelo for Restaurants. It is recommended that you backup your database. If you are using any other Aldelo products make sure that you have backed up their databases as well.

\*\*\*If you are migrating from PC Charge to EDC please ensure that you have undone the integration to PC Charge before continuing.

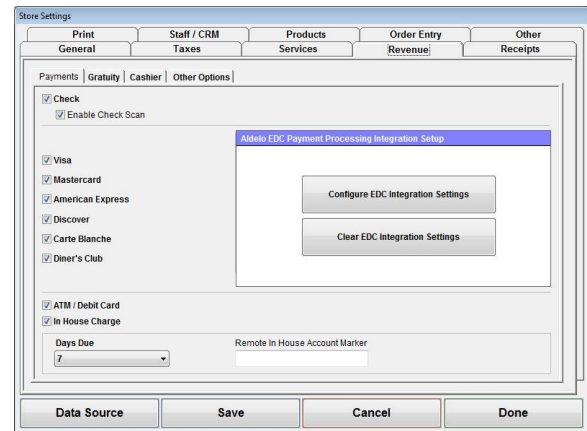
1. **Control Panel=> Add\remove Programs.** Highlight the Aldelo for Restaurants icon and select **"Remove"**.
2. Run the AFR38\_EN.exe installer. Follow the prompts. (Make sure you install any other Aldelo programs you may be using) Launch the Aldelo for Restaurants program.
3. You will be prompted for product registration and may be asked to activate the software. You can do so either via internet or by contacting the Aldelo Support Department.

To set up the Aldelo EDC integration to Aldelo for Restaurants you will need the following information:

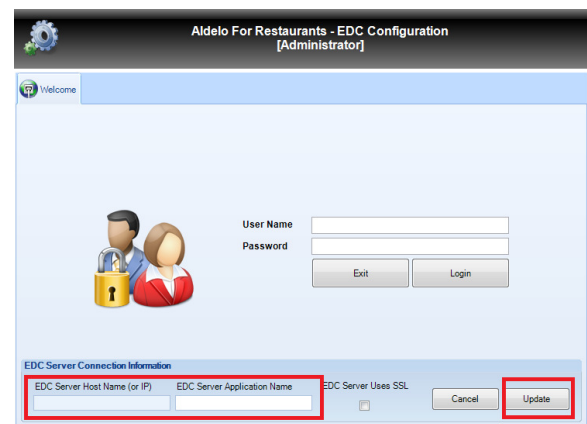
- EDC Administrator User Name and Password
- EDC POS User Name and Token
- EDC Batch User Name and Token
- The IP or computer Name of the EDC Web Service host computer

# Aldelo EDC 6.2 Upgrade Guide

1. To integrate the EDC program with your Aldelo For Restaurants go to the Backoffice >Store Settings > Revenue tab. Click **Configure EDC Integration Settings**. This may take a moment to bring up the integration screen.



2. You will need to input the EDC Server Host Name or IP Address. The EDC Server Application Name will be **AldeloEDC** Unless otherwise configured. Then Click **Update**

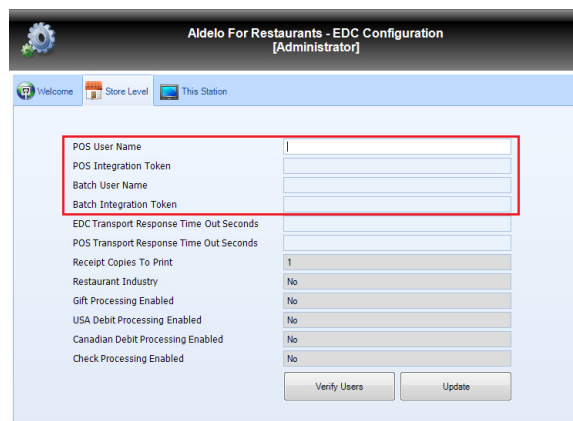


3. You will then need to put in the **EDC Administrators User name and password** and Click **Login**

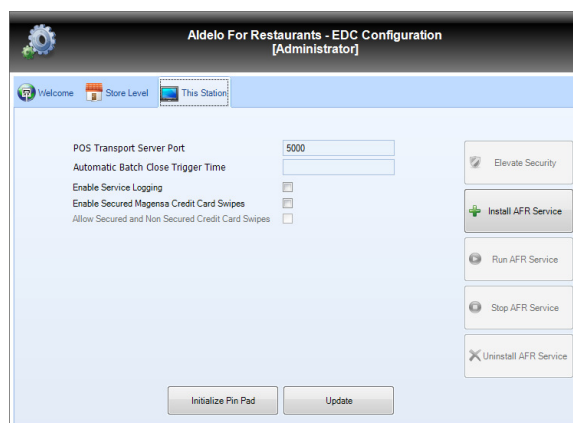


# Aldelo EDC 6.2 Upgrade Guide

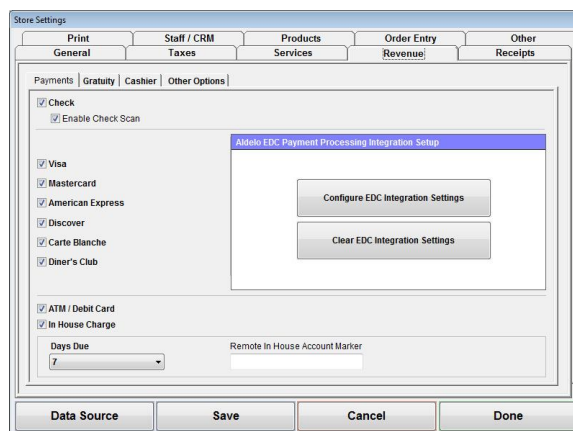
4. You will need to fill in the EDC POS User Name and Token as well as the EDC Batch User Name and Token. Then Click **Verify Users**. This will check to make sure the users match what is in the EDC software. If both return Successful messages click **Update**.



5. If you are Processing **Credit cards only** you will only need to set up the Port number for the Aldelo for Restaurants to communicate to the local Service on (default is 9500). Click **Update**. Once you receive a successful message click **Install AFR Service**. (This step will need to be repeated on your client stations) \*\*\*If processing Checks, EBT, or Debit cards contact the Aldelo Support Department for further assistance.



6. Go back to the Welcome Tab and click **Exit** to return to the Revenue tab of Store Settings. Click **Save** and then **Done**.



The Final step is to Upgrade and integrate any additional client stations that are used to take credit cards on.